

Instructions for Walker Bags

Fabrics

We want the walker bags to last a long time. The fabric for the walker bag should be heavy duty such as upholstery fabric, canvas, duck or heavyweight denim. Sturdy fabric that is not stiff can be reinforced with iron-on interfacing. Feel free to use different fabrics for the backing and the pockets.

The pocket lining fabric should be lightweight and light colored to make finding items in the pockets easier for elderly eyes. We've used muslin, drapery lining and old sheets. Cotton fabrics are often printed on one side and the back side will be light so use up those remnants and fabrics in your stash.

Cut the following:

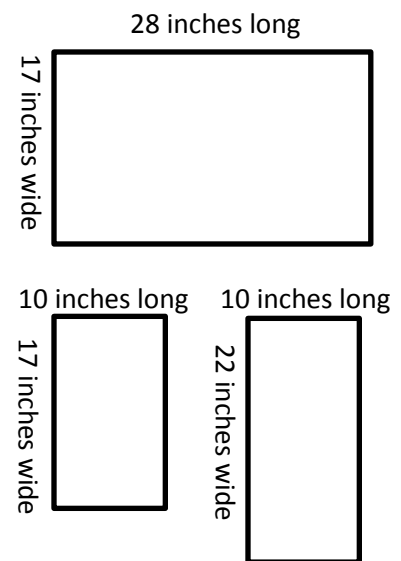
Cut **1 each** from Outer Fabric and **1 each** from Lining Fabric:

1 backing piece 17 inches wide and 28 inches long

1 pocket piece 17 inches wide and 10 inches long

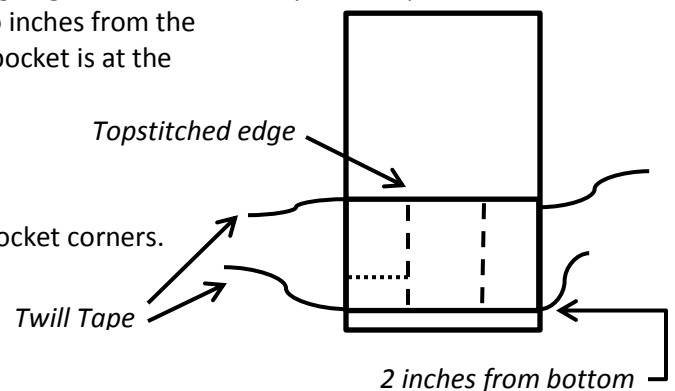
1 pocket piece 22 inches wide and 10 inches long

8 pieces of ½ inch wide or wider twill tape 10 to 12 inches long



Assembly Instructions

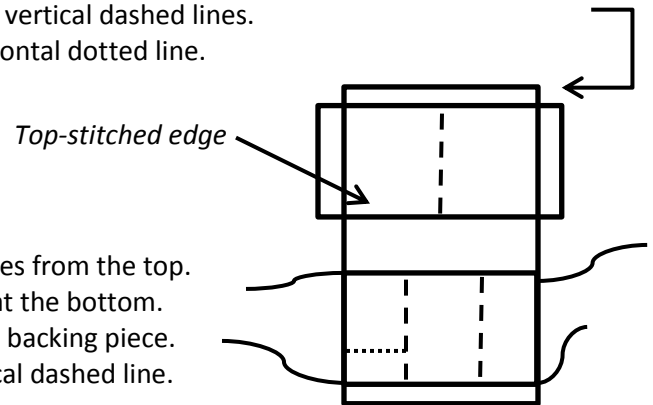
1. Match up backing piece of outer fabric and lining, right sides together. Sew around the perimeter using ½ inch seam allowance leaving an opening for turning. Repeat for the two pocket pieces.
2. Turn and press all pieces.
3. Topstitch the two pocket pieces on one of the long edges. This will be the pocket top side.
4. Place the shorter pocket on the backing piece two inches from the bottom. Make sure the top-stitched edge of the pocket is at the top. Pin in place. See illustration at right.



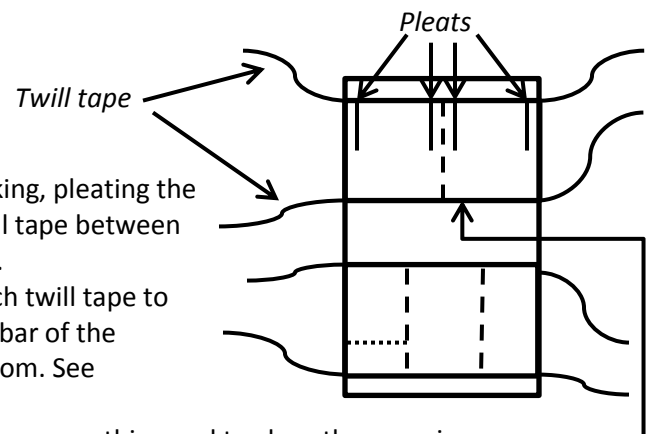
5. Insert twill tape between pocket and backing at pocket corners.

Instructions for Walker Bags

6. Topstitch pocket and twill tape to backing piece. Re-stitch twill tape to secure. You will complete the topstitching of the sides in the last step. *2 inches from top*
7. Divide pocket into thirds vertically and stitch. See vertical dashed lines.
8. Stitch one pocket shorter for cell phone. See horizontal dotted line.



9. Place longer pocket on the backing piece two inches from the top. Make sure the top-stitched edge of the pocket is at the bottom. Center pocket horizontally as pocket is wider than backing piece. Stitch down center. See illustration at right, vertical dashed line.



10. Align pocket left and right edges with edge of backing, pleating the top to make cargo pockets. Pin in place. Insert twill tape between pocket and backing at pocket corners. Pin in place.
11. Topstitch pocket and twill tape to backing. Re-stitch twill tape to secure. Please note that the bag will fold over the bar of the walker so the opening of this pocket is on the bottom. See illustration at right.
12. Topstitch around backing fabric edge to really secure everything and to close the opening where you turned the backing right side out in step 1. *Pocket Opening*

