



#110 Cool Cardigans - Draped Front

— multi-size pattern —

Fits high bust measurement of 31" - 45".

Full bust measurement can be considerably larger.

Cardigans are one of the best accessories that you can add to your wardrobe. Never out of style, this is where "function" meets "fashion" head-on! This asymmetrical cardigan, with a ruched back neckline, has flattering lines intended to make a woman with real curves look slim and stylish - whether you wear it dressy or toss it on over jeans. For winter wear, make it from a cozy sweater or double knit. For summer, choose a lightweight drapery rayon or slinky knit. Pair it with #105 The Perfect Tank Top or the sleeveless top from #108 The Versatile Twin Set!

Pamela's Patterns are designed with the most common fit alterations built right in - high round back, forward shoulder, full hip and tummy, and a separate pattern for a full bustline. They even give you an "essence of waist"! The cardigan is quick and easy to make and include many sewing/fitting tips. If you need extra help, visit Pamela's website and watch helpful video demonstrations on YouTube!

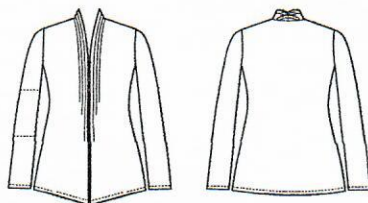
Suggested Fabric:

Good quality knit fabrics including sweater knits, cotton, polyester, rayon, lycra/spandex, stretch velvets. Fabrics with a good "drape" are especially nice.

For online shopping sites, go to Pamela's Favorite Links on pamelaspatterns.com

60" Wide Fabric Required: (Purchase an extra 1/2 yard for narrower widths)

· XS - 2 yards to XL - 2 1/4 yards



Notions:

- Thread
- Small piece of Fantastic Elastic (for ruching)
- Double Sided Fusible Stay Tape (optional)



Pamela's Patterns

www.pamelaspatterns.com



8 37654 99190 9